



RIB BELT - ALL ELASTIC

Made of top quality open weave elastic for breath-ability and comfort. It has hook and loop closures of easy application and simple adjustment to the proper tension. The male belt is a uniform 6" all the way around. The female version has a cut away in the front for comfort.

T326	Male	XS S M L XL XXL	\$ 6.31
T327	Female	XS S M L XL XXL	\$ 6.31

May also be ordered in a universal size

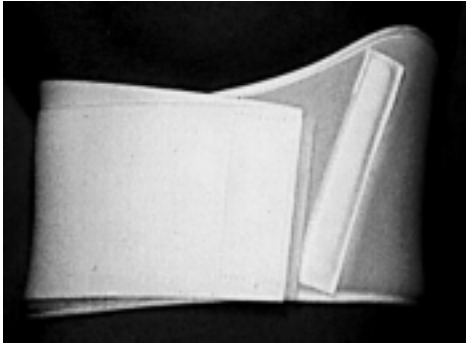
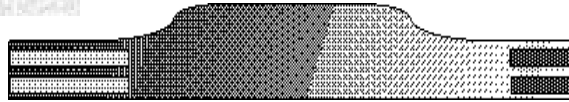
T3241	Male	Universal	\$ 6.31
T3242	Female	Universal	\$ 6.31

May be ordered in an 8" elastic

T328M	Male	S M L XL XXL	\$ 8.02
T328F	Female	S M L XL XXL	\$ 8.02

May also be ordered in a universal size

T3281	Male	Universal	\$ 8.29
T3282	Female	Universal	\$ 8.29



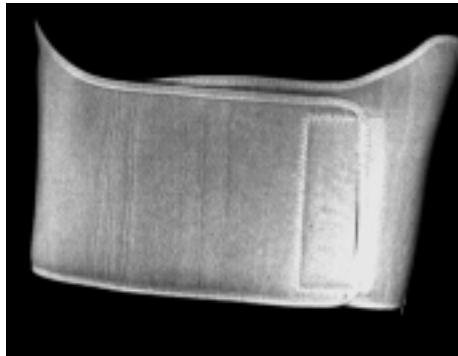
RIB BELT - DELUXE

Made with doubled 4" elastic that tapers from 6" to 4" in the front, with an added foam panel for maximum adjustability and two angled stays to prevent rolling.

T3254	Male	Universal	\$ 7.61
T3255	Female	Universal	\$ 7.61

Male version may also be ordered in an 8" elastic

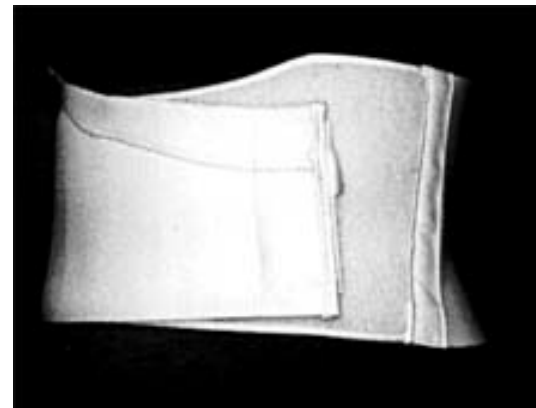
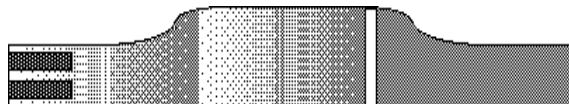
T3284	Male	Universal	\$ 10.07
-------	------	-----------	----------



RIB BELT - ELASTIC/FOAM

Constructed of 6" elastic and a generous universal foam panel for easy application.

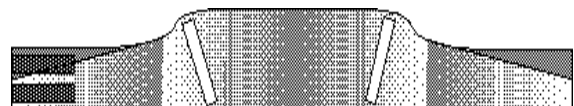
T3251	Male	Universal	\$ 6.54
T3252	Female	Universal	\$ 6.54



RIB BELT - PLUSH

Made with top quality 6" plush lined elastic. The elastic is rolled to form the cut away relief for the breasts. This rolled edge makes a remarkably smooth non irritating edge for patient comfort. It has a universal velfoam panel for maximum adjustability and two covered stays to prevent rolling.

T3254B	Male	Universal	\$ 7.61
T3255B	Female	Universal	\$ 7.61





SHOULDER IMMOBILIZER- UNIVERSAL

Constructed of top velfoam body wrap with movable wrist and biceps cuffs. This device minimizes abduction and rotation. It may be used for either right or left arm.

T225U Universal \$ 14.98

SHOULDER IMMOBILIZER- KODEL

IMPROVED DESIGN AND MATERIALS. Constructed of top quality elastic with Kodel padded wrist and biceps cuffs. This device adds a very comfortable wide shoulder strap to eliminate the constant downward migration so common with elastic shoulder immobilizers. It minimizes abduction and rotation. It may be used for either right or left arm.

T2231 XS S M L XL \$ 16.58

May be ordered in a universal size

T2233 Universal \$ 16.05



SLING & SWATHE

This device virtually eliminates abduction and rotation, for immobilization of dislocations and sprains. The generous pouch sling supports the wrist and forearm. The weight is evenly distributed over both shoulders by the two back criss crossing straps. It may be used for either the right or left arm.

T22U XS S M L XL \$ 9.96

May be ordered with enclosed elbow.

T22UE XS S M L XL \$ 13.50

May be ordered in a universal size

T22UU Universal \$ 12.84

SHOULDER IMMOBILIZER- ELASTIC

Constructed of top quality elastic with wrist and biceps cuffs. This device minimizes abduction and rotation. It may be used for either right or left arm.

T223 Female XS S M L XL \$ 10.74

T222 Male XS S M L XL \$ 10.74

VELPEAU SHOULDER IMMOBILIZER

This device minimizes rotation and abduction, the deep arm sling encloses the arm and supports the wrist to prevent wrist drop. The body strap is attached to the sling at the elbow and returns to fasten in the front for easy adjustment.

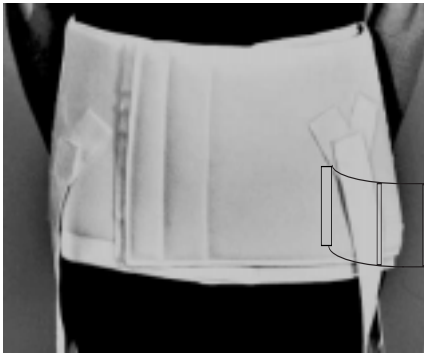
T23 XS S M L XL \$ 5.72

SOFT STRAP - May be ordered with a very comfortable 2" wide velcro sensitive foam strap. Velcro closures replace the buckle adjustments.

T23S XS S M L XL \$ 6.31

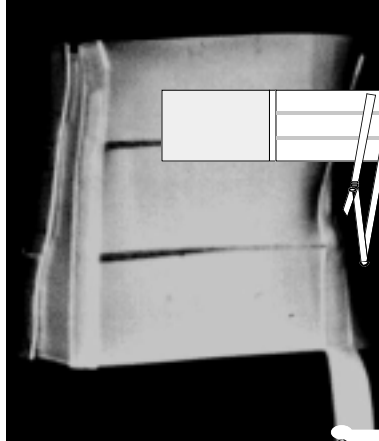


PELVIC TRACTION BELT - UNIVERSAL



This is a very versatile belt. It solves many inventory problems. One size fits all or most all. Extenders are available for the larger patients. It is constructed of a soft universal velfoam with generous hook and pile closures. It may be ordered for either single or double pull and in either 7" or 9" heights.

T2517	7" SINGLE PULL	UNIVERSAL	\$ 17.12
T2519	9" SINGLE PULL	UNIVERSAL	\$ 19.26
T2527	7" DOUBLE PULL	UNIVERSAL	\$ 19.26
T2529	9" DOUBLE PULL	UNIVERSAL	\$ 20.33
T2517E	7" EXTENDER	LENGTHENS BELT 12"	\$ 3.74
T2519E	9" EXTENDER	LENGTHENS BELT 12"	\$ 4.01



PELVIC TRACTION BELT - 3 PANEL

This 9" belt is divided into three 3" elastic panels to better contour to the patient and offer a more secure fit. It has hook and pile closures and is available in a double pull.

T2531	9" DOUBLE PULL	XS S M L XL XXL	\$ 15.94
		XS 24-28 S 28-32 M 32-36 L 36-40 XL 40-44 XXL 44-48	

PELVIC TRACTION BELT - CANVAS

Manufactured from a sturdy Canton Canvas with a plush flannel lining, adjustable traction straps with slide buckles and "D" ring attachment. Made with generous hook and pile closures for easy adjustments. Available in six sizes.

T2542	7" DOUBLE PULL	UNIVERSAL	\$ 15.78
		XS 26-30 S 30-30 M 34-38 L 38-42 XL 42-46 XXL 46-50	

Also may be ordered in a single pull

T254	7" SINGLE PULL	UNIVERSAL	\$ 15.78
------	----------------	-----------	----------

HEAD HALTER - UNIVERSAL

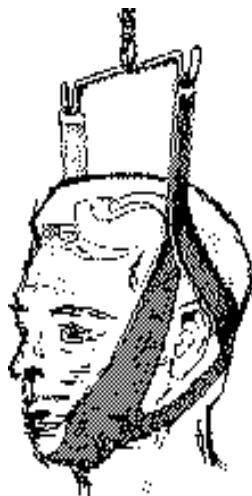
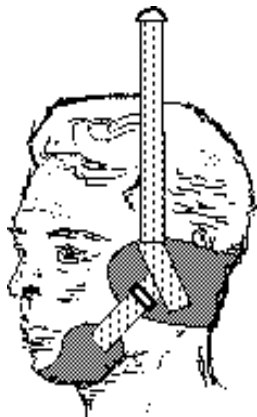
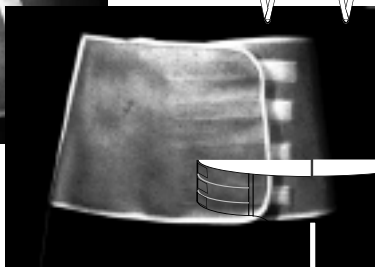
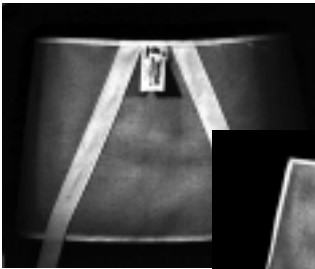
Manufactured from a sturdy Canton Canvas with a plush flannel lining, adjustable traction straps with slide buckles and "D" ring attachment. Made with generous hook and pile closures for easy adjustments.

T8067	UNIVERSAL	\$13.64
-------	-----------	---------

HEAD HALTER - UPPER "7"

Manufactured with a comfortable foam with a plush flannel lining, inside and a durable canvas on the outside, adjustable traction straps with slide buckles and "D" ring attachment. Made with generous hook and pile closures for easy adjustments.

T8066	UNIVERSAL	\$25.03
-------	-----------	---------





WRIST WRAP - 3"

Made with a comfortable 2" plush elastic with hook and pile closure. Easy to apply. Basic wrist wrap.

T301 XS S M L XL \$ 2.53

May be ordered in a Universal size

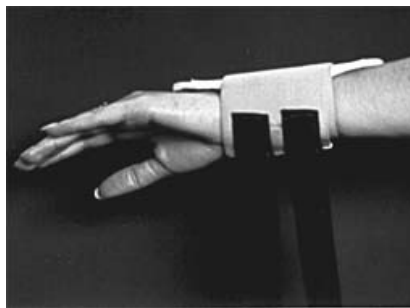
T301U Universal \$ 2.53



WRIST WRAP with Thumb Loop

Constructed of top quality elastic with hook and pile closure and a thumb loop for easy application. It may be used for either right or left arm.

T301H XS S M L XL \$ 4.01



CARPAL TUNNEL /RANGE OF MOTION

This support is different in that it does not immobilize the wrist but, instead restricts the range of motion to limit the repetitive motion that is irritating the wrist without interfering with other movements. It may be worn in any position around the wrist. It fits either right or left wrist.

T3002 Universal \$ 11.71



ELASTIC WRIST SPLINT

An effective splint for relief of the sprained wrist. Made with 6" elastic with both dorsal and palmar malleable stays and hook and pile closures for easy application.

T30L Left S M L XL \$ 6.17

T30R Right S M L XL \$ 6.17



WRIST SPLINT - OPEN MESH ELASTIC

Cut from 8" elastic. This support is constructed with a unique open weave elastic that has much less heat build up. Which makes it more comfortable to wear while still offering positive control. The molded aluminum stay is cut to fit the palmar crease for added support and comfort.

T3004 S M L XL \$ 13.98



WRIST SPLINT - CANVAS/FOAM

Constructed of a sturdy grey canvas laminated with foam and lined with a plush flannel, The split palmar steel is cut to the palmar crease. It also has a malleable dorsal stay. Together they restrain the hand in the dorsiflexion position. This splint is excellent for use on sprains.

T300 order right or left S M L XL \$ 8.82

May be ordered in a longer version : Wrist & Forearm Splint

T313 order right or left S M L XL \$13.85



SHIN SPLINT

We have a brand new wrap for “shin splints” for runners, gymnasts, basketball and soccer, etc.. It has been very well received. It ends the need for endless taping of the athletes. They no longer have to shave their legs or endure the hair pulling tape removal. Trainers like it because the athletes themselves can put it on thus saving them considerable time and complaints. This support consists of a velcro sensitive neoprene brace with three straps that wrap around the calf for a custom fit. The straps compress the calf and presses a neoprene pad along the shin for added compression along the afflicted area. It has a unique power zone closure,

T4999 Calf size: Medium up to 15”
 Large up to 19” X Large up to 24” \$ 20.22

ANKLE SUPPORT with Heel Cutout

For mild sprains, an 8” neoprene pull on support with a cutout of the heel area for patient comfort.

T3409 S M L XL \$ 7.82

ACTIVE ANKLE with Figure 8 Wrap & Spiral Stays

This design is unique. There has long been a need for an ankle support that would allow function and not just immobilize. This device gives the patient maximum support without interfering with performance. The thin neoprene may be worn under a sock in a running shoe. The 3” elastic figure eight gives support without the bother and expense of continuous taping. But, the real advantage of this support comes from the double medial and lateral spiral stays.

T3406 S M L XL \$ 19.20

10” LUMBAR BELT with Side Pulls and Sacro Pad

Constructed of top quality 4 way stretch 1/8” neoprene, double sided nylon, and velcro closures. The double pull secures the 1/2” compression sacro pad to give positive support and they are function independently to give added compression as needed. It has 4 spiral stays positioned to prevent rolling. The 4 way stretch neoprene makes this a very comfortable support to wear even for the very active patient.

Measure at the waist

T2199 S 20-30” M 31-36” L 37-45” XL 46-56” \$ 31.99

10” LUMBAR BELT with Overlapping Side Pulls

10” neoprene support belt with 4 spiral stays and generous 6” elastic overlapping double pulls. Provides excellent compression support for the lower back.

Measure at the waist

T3981 S 20-30” M 31-36” L 37-45” XL 46-56” \$ 27.71